



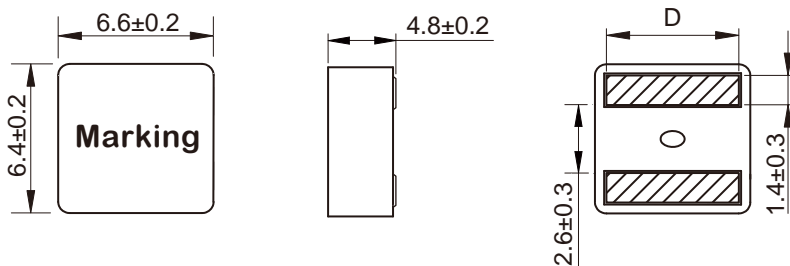
Wire Wound Molded SMD Power Inductors Size 6050



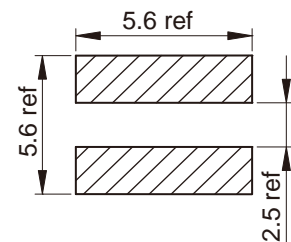
- So saturation
- High current, low DCR, high efficiency
- Very low acoustic noise and very low leakage flux noise
- High reliability
- 100% Lead (Pb)-Free and RoHS compliant
- Operating temperature -55~+125°C (Including self-temperature rise)
- Quantity: 800pcs

- Note PC power system, incl. IMVP-6
- DC/DC converter

Dimensions: [mm]



Land Pattern: [mm]



Electrical Properties:

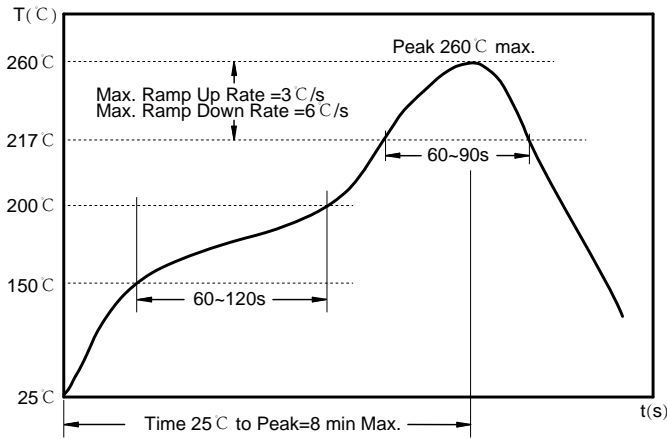
Part No	Inductance @ 100kHz/0.1V (μ H)	Tolerance	Saturation Current Typ. (A)	Saturation Current Max. (A)	Temperature Rise Current Typ. (A)	DC Resistance Max. (m Ω)	D (mm)
MDTE6050-R82M	0.82	±20%	24.0	20.0	21.0	4.18	5.3±0.3
MDTE6050-1R0M	1.00	±20%	23.0	18.0	20.0	4.52	5.3±0.3
MDTE6050-1R2M	1.20	±20%	22.0	16.0	18.0	5.83	5.3±0.3
MDTE6050-1R5M	1.50	±20%	19.5	14.5	17.0	6.30	5.3±0.3
MDTE6050-1R8M	1.80	±20%	18.5	13.5	16.0	7.10	5.3±0.3
MDTE6050-2R2M	2.20	±20%	16.0	12.0	13.0	8.50	5.2±0.3
MDTE6050-3R3M	3.30	±20%	12.5	10.0	11.0	12.5	5.2±0.3
MDTE6050-4R3M	4.30	±20%	11.0	8.5	9.0	16.2	5.2±0.3
MDTE6050-4R7M	4.70	±20%	10.5	8.0	8.5	18.4	5.2±0.3

Saturation Current will cause L to drop approximately 30%

Temperature Rise Current: The actual value of DC current when the temperature rise is $\Delta T=40^{\circ}\text{C}$



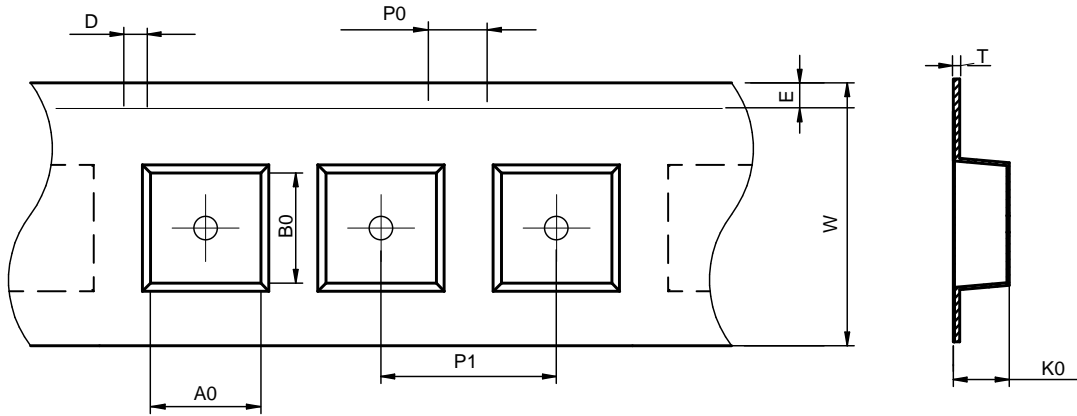
Soldering Reflow:



Preheat condition: 150 ~200°C / 60~120 sec.
 Allowed time above 217°C: 60~90 sec.
 Max temperature: 260°C.
 Max time at max temperature: 10 sec.
 Allowed Reflow time: 2x max.

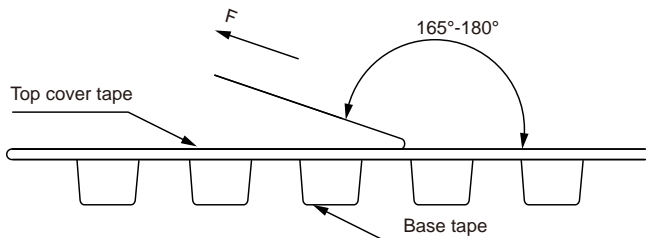
Packaging Information:

Tape Dimension:



Series	A0 (mm)	B0 (mm)	D (mm)	P0 (mm)	P1 (mm)	W (mm)	K0 (mm)	E (mm)	T (mm)
MDTE6050	7.0±0.1	6.8±0.1	1.5±0.1	4.0±0.1	12.0±0.1	16.0±0.3	5.3±0.1	1.75±0.1	0.35±0.05

Peel force of top cover tape:



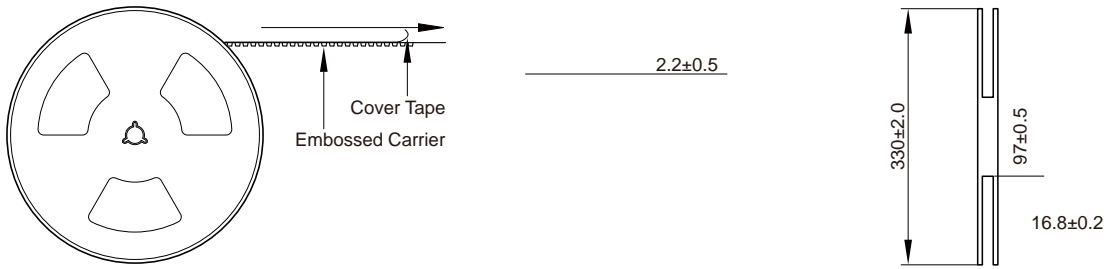
The peel force of top cover tape shall be between 0.1 to 1.3 N

Product Marking:

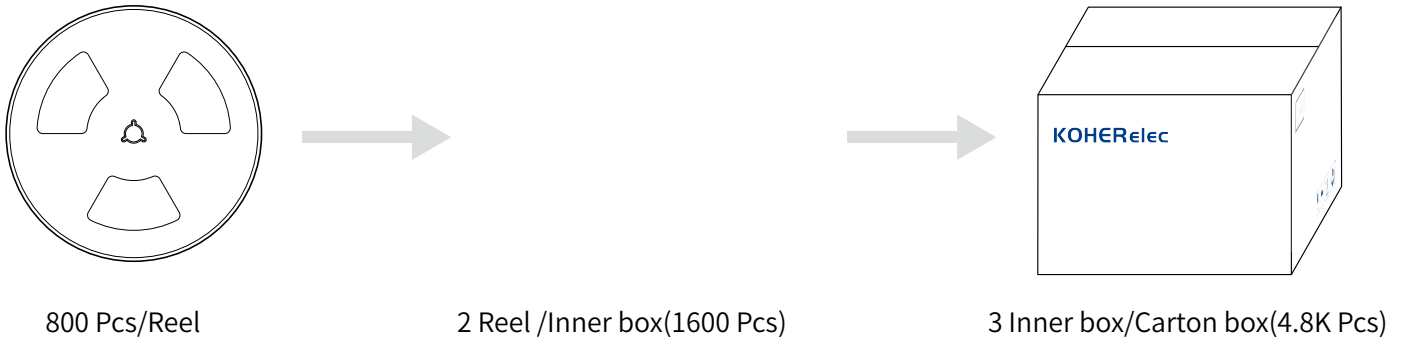
Marking	Printing (Inductance)
---------	-----------------------



Reel Dimension: [mm]



Packaging Quantity:



Cautions and Warnings:

Storage Conditions:

- Please do not handle products carelessly to prevent any damage caused by dropping, downraining, inappropriate storage, etc. The storage period is 12 months after the completion of production. The storage conditions are 23±2°C and 65±5%RH.
- Please do not use products with any symptoms after the completion of production. The storage conditions are 23±2°C and 65±5%RH.
- Please do not use products with any symptoms after the completion of production. The storage conditions are 23±2°C and 65±5%RH.
- Please do not use products with any symptoms after the completion of production. The storage conditions are 23±2°C and 65±5%RH.

Operation Instructions:

-
-
-
-