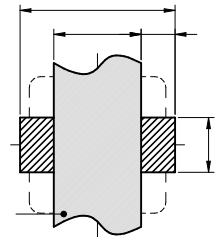
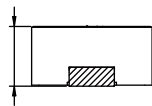
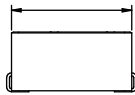
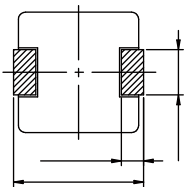




- Molded type
- High saturation current due to CIP material
- Nature air gap and no acoustic noise
- Different sizes available
- Quantity: 500pcs

- High current DC/DC converter
- LC filter



	(μH)		(A)	Saturation (A)	($\text{m}\Omega$)	($\text{m}\Omega$)
MD1365-R15M	0.15	$\pm 20\%$	55	118	0.49	0.6
MD1365-R22M	0.22	$\pm 20\%$	53	112	0.47	0.6
MD1365-R30M	0.30	$\pm 20\%$	48	72	0.6	0.72
MD1365-R33M	0.33	$\pm 20\%$	46	68	0.65	0.8
MD1365-R36M	0.36	$\pm 20\%$	45	66	0.7	0.9
MD1365-R40M	0.40	$\pm 20\%$	44	64	0.7	1.0
MD1365-R47M	0.47	$\pm 20\%$	41	63	0.9	1.2
MD1365-R50M	0.50	$\pm 20\%$	40	60	0.92	1.25
MD1365-R56M	0.56	$\pm 20\%$	37	58	1.05	1.2
MD1365-R68M	0.68	$\pm 20\%$	35	55	1.25	1.5
MD1365-R82M	0.82	$\pm 20\%$	33	50	1.5	1.9
MD1365-1R0M	1.00	$\pm 20\%$	30	48	1.7	2.3
MD1365-1R5M	1.50	$\pm 20\%$	27	45	2.5	3.0
MD1365-2R2M	2.20	$\pm 20\%$	22	37	3.8	4.2
MD1365-3R3M	3.30	$\pm 20\%$	18	30	5.7	6.8
MD1365-4R7M	4.70	$\pm 20\%$	13.5	28	7.0	8.4
MD1365-5R6M	5.60	$\pm 20\%$	12.5	23	8.5	10
MD1365-6R8M	6.80	$\pm 20\%$	11.5	18	9.5	11.5

	(μH)		(A)	Saturation (A)	(m Ω)	(m Ω)
MD1365-8R2M	8.20	$\pm 20\%$	10.5	16	12	15.5
MD1365-130M	13.0	$\pm 20\%$	9.0	13	21	24
MD1365-150M	15.0	$\pm 20\%$	9.0	12.5	23.2	28
MD1365-220M	22.0	$\pm 20\%$	9.0	12	32.5	37
MD1365-330M	33.0	$\pm 20\%$	8.0	11	48	58
MD1365-470M	47.0	$\pm 20\%$	6.5	9.5	76	90

Operating temperature : $-40\text{C} \sim +125\text{C}$

Temperature rise current : The actual value of DC current when the temperature rise is $\text{T}40\text{C}$

Saturation Current that will cause initial inductance to drop 20% approximately .

